

**RIGBY'S**  
ENTERTAINMENT COMPLEX

**DEC  
7TH**

# ROCKIN' ROBINS

62nd Annual Warner Robins  
Christmas Parade



[WWW.RIGBYSWATERWORLD.COM/CHRISTMASPARADE](http://WWW.RIGBYSWATERWORLD.COM/CHRISTMASPARADE)  
478-287-6715

# GRAND MARSHALS

- OFFICIAL GRAND MARSHAL
  - POW/MIA CHAIR OF HONOR
  
- HONORARY GRAND MARSHAL
  - WWII VETERANS

# **SAFETY BRIEFING ATTENDANCE IS MANDATORY**

- ALL DRIVERS AND SAFETY OFFICERS MUST ATTEND A SAFETY BRIEFING IN ORDER TO PARTICIPATE. **IT IS THE UNIT SAFETY OFFICER'S RESPONSIBILITY TO COMMUNICATE ALL THE RULES TO THEIR UNIT(S).**
- NUMBERS FOR UNITS WILL BE ISSUED AT THE BRIEFING, EXCLUDING PARTICIPANTS WITH LEASED FLOATS
- BRIEFING MATERIAL IS ALSO AVAILABLE ON OUR WEBSITE AT [RIGBYSWATERWORLD.COM/CHRISTMASPARADE](http://RIGBYSWATERWORLD.COM/CHRISTMASPARADE)

# **SAFETY OFFICERS**

- **YOU ARE RESPONSIBLE FOR YOUR GROUPS SAFETY**
  - **PLEASE PASS ALONG ALL SAFETY AND GENERAL INFORMATION TO YOUR UNIT(S)**

# PARADE CHAIN OF COMMAND

**RIGBY'S**  
GRACIE RIGBY & KELLY MABIE

**LAW ENFORCEMENT**  
CAPT. TODD EDWARDS

## ZONE MARSHALS\*

**LEASED FLOATS**  
JENNA CAMPBELL

**CREATIVE FLOATS**  
THURLOW ORR

**VEHICLES**  
RACHEL RIGBY

**MARCHING UNITS**  
JULIAN BARBER

**MAIN STAGE**  
PATRICK LAYSON

**DISMOUNT**  
STEVE BROWN

\*ZONE MARSHALS ARE IN CHARGE OF STAGING AREAS AND UNIT ASSEMBLY. THEY HAVE FINAL AUTHORITY OVER DECISIONS WITHIN THE ZONES.

## VOLUNTEERS\*

**PARKING/DISMOUNT**  
HOUSE OF GRACE

**VENDORS**  
JIM TAYLOR

**WWII**  
KAREN SISK

**RADIOS**  
JON & BILL

\*VOLUNTEERS (AND STAFF) WORKING THE PARADE WILL BE WEARING ORANGE SAFETY VESTS AT ALL TIMES

# **SAFETY IS OUR TOP PRIORITY**

- **PLEASE REPORT ANY ACCIDENTS TO THE NEAREST POLICE OR PARADE OFFICIAL**
- **FAILURE TO ABIDE BY PARADE RULES WILL RESULT IN EJECTION FROM THE PARADE AND POSSIBLY EXCLUSION FROM FUTURE RIGBY'S EVENTS**
- **PARTICIPATION IN THE CHRISTMAS PARADE IS A PRIVILEGE, NOT A RIGHT.**

# **SAFETY REMINDERS**

- **PASSENGERS SHOULD REMAIN SEATED ON UNITS UNLESS THE ZONE MARSHAL HAS DETERMINED THAT FIRM HANDHOLDS ARE SUFFICIENT FOR PARTICIPANTS TO SAFELY STAND**
- **MOVEMENT OF UNITS OUT OF THE STAGING AREAS BEGIN ON THE ORDER OF THE PARADE COORDINATOR**
- **IF A VEHICLE OR FLOAT ALSO HAS PEOPLE MARCHING ALONGSIDE, MAINTAIN A DISTANCE OF 6 FEET FROM THE UNIT**

# SAFETY REMINDERS

- UNITS SHOULD MAINTAIN AN INTERVAL OF BETWEEN **25 TO 50 FEET** FROM THE UNIT IN FRONT OF THEM DURING THE PARADE
- ONCE A UNIT LEAVES THE STAGING AREA, **NO ONE MAY GET ON OR OFF THE UNIT** UNTIL IT REACHES THE DISMOUNT AREA.
  - FAILURE TO COMPLY CAN RESULT IN REMOVAL FROM PARADE DURING ROUTE & SUSPENSION FROM FUTURE EVENTS



# GENERAL PARADE RULES

- **ONLY ONE “SANTA CLAUS” IS ALLOWED.** THE “OFFICIAL” SANTA IS PROVIDED BY RIGBY’S
- MUSIC IS ENCOURAGED! ONLY CHRISTMAS/PARADE THEMED MUSIC MAY BE PLAYED. ZONE MARSHALS WILL APPROVE VOLUME LEVEL.
- YOUNG CHILDREN MUST HAVE ADULT SUPERVISION AT ALL TIMES
- DURING THE PARADE, REMAIN ON THE WESTBOUND LANE OF COHEN WALKER DRIVE

# GENERAL PARADE RULES

- DANGLING LEGS OVER THE SIDE OF A VEHICLE OR FLOAT IS PROHIBITED
- **NOTHING** MAY BE THROWN OR DISTRIBUTED IN ANY MANNER FROM VEHICLES, FLOATS, OR MARCHING/WALKING UNITS TO SPECTATORS
- THERE IS TO BE **NO PHYSICAL CONTACT** BETWEEN PARADE PARTICIPANTS AND SPECTATORS

# GENERAL PARADE RULES

- AVOID SUDDEN STOPS OR STARTS
- UNITS WITH SPECIAL SHOWS SHOULD PERFORM WHILE MOVING TO AVOID A STANDSTILL. IF PARADE STOPS, UNITS MAY USE THIS TIME TO BRIEFLY PERFORM IN PLACE.
- IF UNIT BREAKS DOWN, DRIVER WILL ATTEMPT TO MOVE THE VEHICLE. PASSENGERS WILL NOT GET OFF UNIT UNTIL INSTRUCTED TO DO SO BY POLICE OR PARADE OFFICIAL

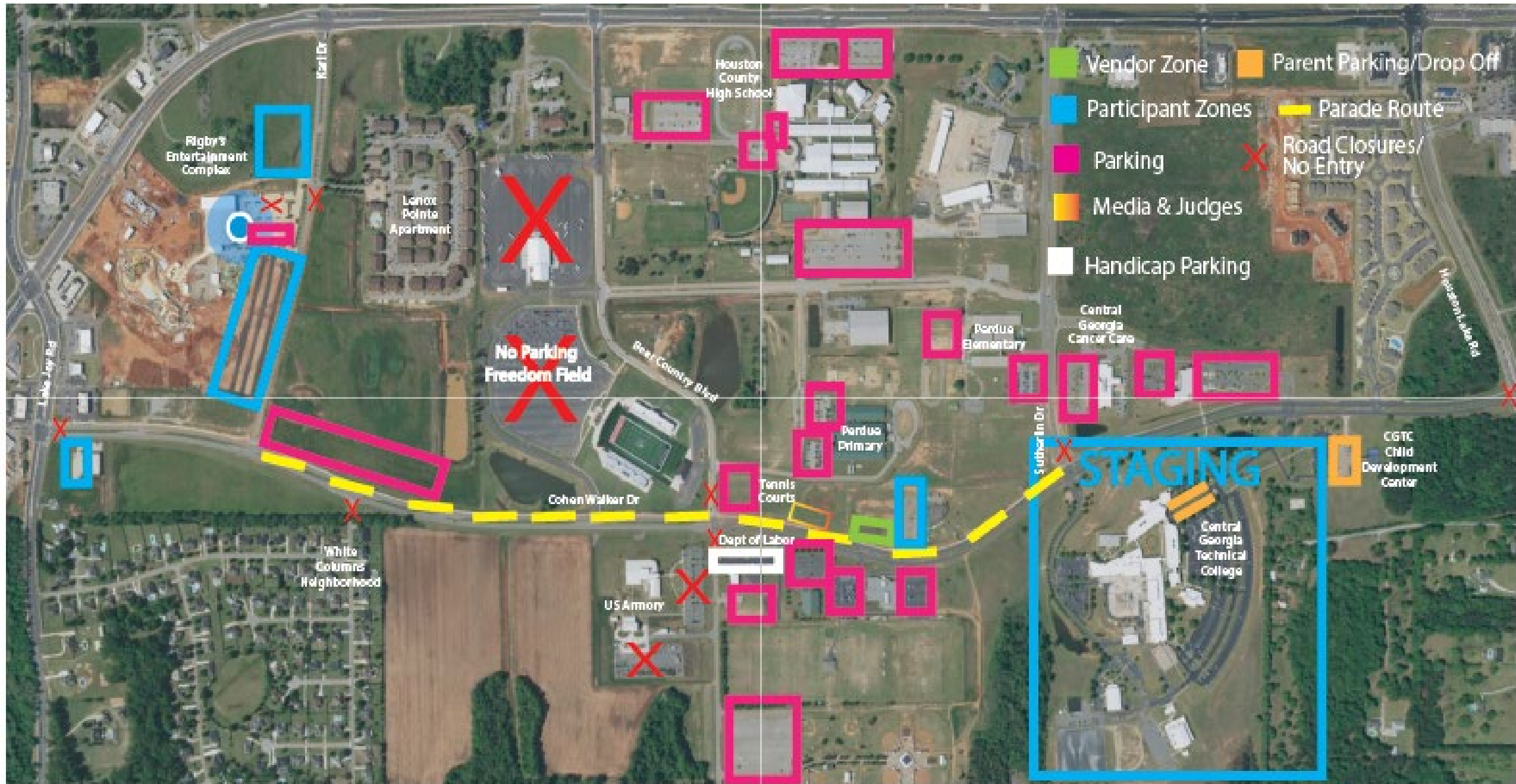
# WHEN TO BE WHERE

- A MEMBER OF YOUR UNIT MUST BE AT YOUR DESIGNATED STAGING AREA BY **2:00PM**
- THE REMAINDER OF YOUR UNIT SHOULD BE IN PLACE BETWEEN **2:45PM-3:00PM**. ALL MUST BE IN PLACE BY **3:00PM**.
- BE READY TO MOVE BY **3:30PM**
- UNITS THAT ARRIVE LATE WILL FORFEIT THEIR PLACE IN THE PARADE

# PARADE TIMELINE

<b>TIME</b>	<b>ACTIVITY</b>
<b>2:00PM</b>	<b>A MEMBER OF EACH UNIT MUST BE IN STAGING</b>
<b>3:00PM</b>	<b>ENTIRE UNIT MUST BE IN PLACE</b>
<b>3:30PM</b>	<b>CLOSE COHEN WALKER DRIVE</b>
<b>3:35PM</b>	<b>ZONE MARSHALS BEGIN MERGING UNITS</b>
<b>4:00PM</b>	<b>PARADE BEGINS</b>

# PARADE MAPS



Vendor Zone

Parent Parking/Drop Off

Participant Zones

Parade Route

Parking

Road Closures/  
No Entry

Media & Judges

Handicap Parking

STAGING

CGTC  
CNID  
Development  
Center

Rigby's  
Entertainment  
Complex

Lenoir  
Pointe  
Apartment

Houston  
County  
High School

No Parking  
Freedom Field

Pardus  
Elementary

Central  
Georgia  
Cancer Care

Pardus  
Primary

Tennis  
Courts

Dept of Labor

US Army

Central  
Georgia  
Technical  
College

White  
Columns  
Neighborhood

Karl Dr

Lake Jay Rd

East Country Blvd

Cohen Walker Dr

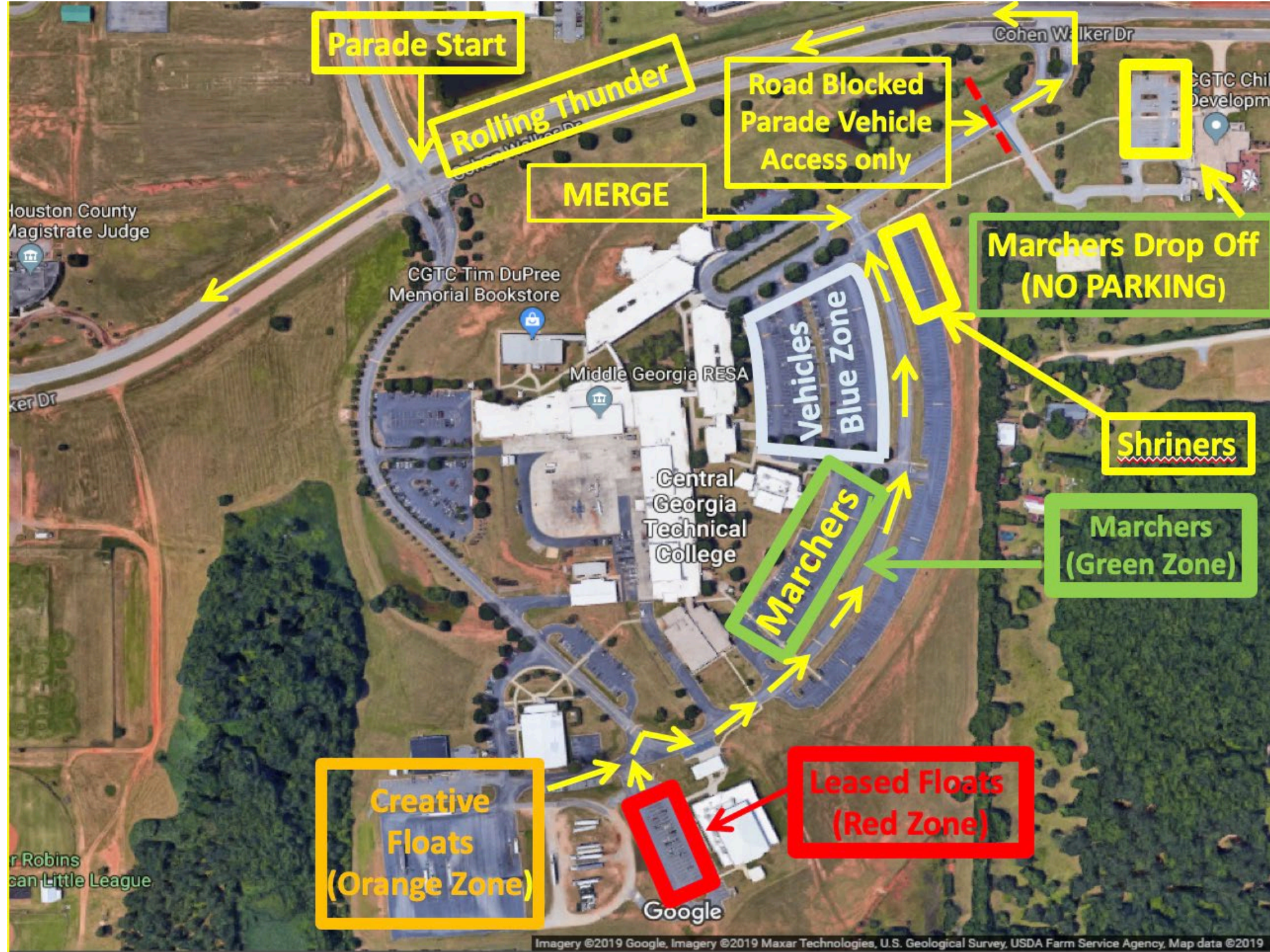
Sutherlin Dr

Wagonwheel Rd

# **PARTICIPANT PARKING REMINDERS**

- **PARADE PARTICIPANT PARKING WILL BE AVAILABLE BY THE GYM OF CGTC**
- **20 MINUTE DROP OFF PARKING WILL BE AVAILABLE AT CGTC CHILD DEVELOPMENT CENTER**
- **DRIVE THRU DROP OFF PARKING WILL BE AVAILABLE IN FRONT OF CGTC BY BUILDING "A"**





**Parade Start**

**Rolling Thunder**

**Road Blocked  
Parade Vehicle  
Access only**

**MERGE**

**Marchers Drop Off  
(NO PARKING)**

**Vehicles  
Blue Zone**

**Shriners**

**Marchers  
(Green Zone)**

**Marchers**

**Creative  
Floats  
(Orange Zone)**

**Leased Floats  
(Red Zone)**

# DISMOUNT INFORMATION

- Street legal vehicles without passengers to unload (including leased floats & Shriners)
  - Continue straight on Cohen Walker (Greenlight)
- Units with passengers to unload
  - Must turn right onto Karl Drive
    - Bus parking for ROTC/Marchers/Bands will be in the grass area at the intersection of Hwy 96 & Karl Drive
    - Creative floats pull into first lane stop long enough for riders to get off floats
      - Parent pick up in back two lanes



**Bus Parking  
ROTC/Marchers/  
Band pick up Area**

**Road Blocked  
South of  
Intersection**

**(Parents Pick-up)  
Creative Float Riders  
Disband on the Two Back  
Rows**

**Special Event  
(No Parking)**

**Creative Floats,  
(First Lane),  
will only stop long  
enough for riders to  
get off floats.**

**Leased Floats and  
Shriners continue  
straight**

**ROTC/Marchers and  
Bands turn right onto  
Karl to disband at  
Pick up Area**

**Shriners  
Parking**

**JUDGES:**

**ROLLING THUNDER: GRAND MARSHALL AWARD  
(BEFORE PARADE BEGINS, DISPLAY ON FLOAT)**

**BETWEEN FRIENDS: MOST ORIGINAL**

**DECADENT DESSERT: BEST THEME**

**RIGBY'S: BETS OVERALL**

**WE CARE HEATING & AIR: BEST SCHOOL SPIRIT**

**JAMIE MOORMAN REALTY: BEST BUSINESS**

**SASS SALON & SPA: MOST SYLE**

**SOUTHERN CRUSH BOUTIQUE: LOOK WHO CRUSHED IT**

**MAGISTRATE COURT  
BUILDING -->**

**<--PERDUE FIELD**

**MEDIA & JUDGES**



**VENDOR, JUDGE &  
MEDIA PARKING**

# REMINDERS

- PAYMENT
- UNIT DESCRIPTION
  - MEDIA
- INSURANCE CARD
- UNIT NUMBER
  - SUBJECT TO CHANGE
- VENDOR LICENSES
  - BUSINESS PERMIT, FOOD PERMIT, PEDDLERS PERMIT

**THANK YOU!**



*Happy  
Holidays*

